

---

---

# Japanese Survival Guide

— Etiquette —

---

---

Miguel Lozoya Burciaga / Julissa García / Bria Overs / Tomoaki Yui

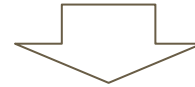
Shinto



Bushido



Business  
Etiquette



Public  
Etiquette

---

---

# *Shinto*

— ~ In order to understand —  
the Japanese mind ~

---

---

# Basic Concept of *Shinto*①

- ***Kami*** : First of all, *Kami* and god are different. Everything in this world has possibility to be *Kami*. In *Shinto*, people believe that there are a variety of *Kami*.



# Basic Concept of *Shinto*②

- **Nature** : All nature has a different *Kami*. That is why Japanese people respect nature and they live with nature in daily life.



# Spirit of Respect for Nature

## *Itadakimasu & Gochisousama*

Before eating, Japanese people say “Itadakimasu” to show their gratitude for nature and the person who made the food. And also say “Gochisousama” after eating to show their gratitude again. This concept comes “*Yaoyorozu-no-kami*”.



---

---

# *Bushido*

— ~ Japanese Morality ~ —

---

---

# Understanding Bushido

The History, Functions, and  
Meanings



- “The way of the warrior”
  - “Moral instincts”
  - Several uses:
    - Support
    - Atonement
    - Dedication
    - Loyalty
  - Functions
    - Perfect willingness to die
    - Total separation of morality and self-interest
    - Spontaneity and freedom
    - Self-assertion
-



# Modern Day Bushido

- Nenko/Lifetime Employment
  - “Gives employees job security and promotes strong corporate loyalty, high motivation and group effectiveness” (Oh, 1976)
  - Loyalty and Dedication
    - Develops through similar interests and characteristics
- Focuses on how one is seen by others
  - More about how one acts
  - Less about why one acts

---

---

# *Meeting Etiquette*

— ~ Survive the Workplace ~ —

---

---

# Purpose of Japanese Meetings



Harmony



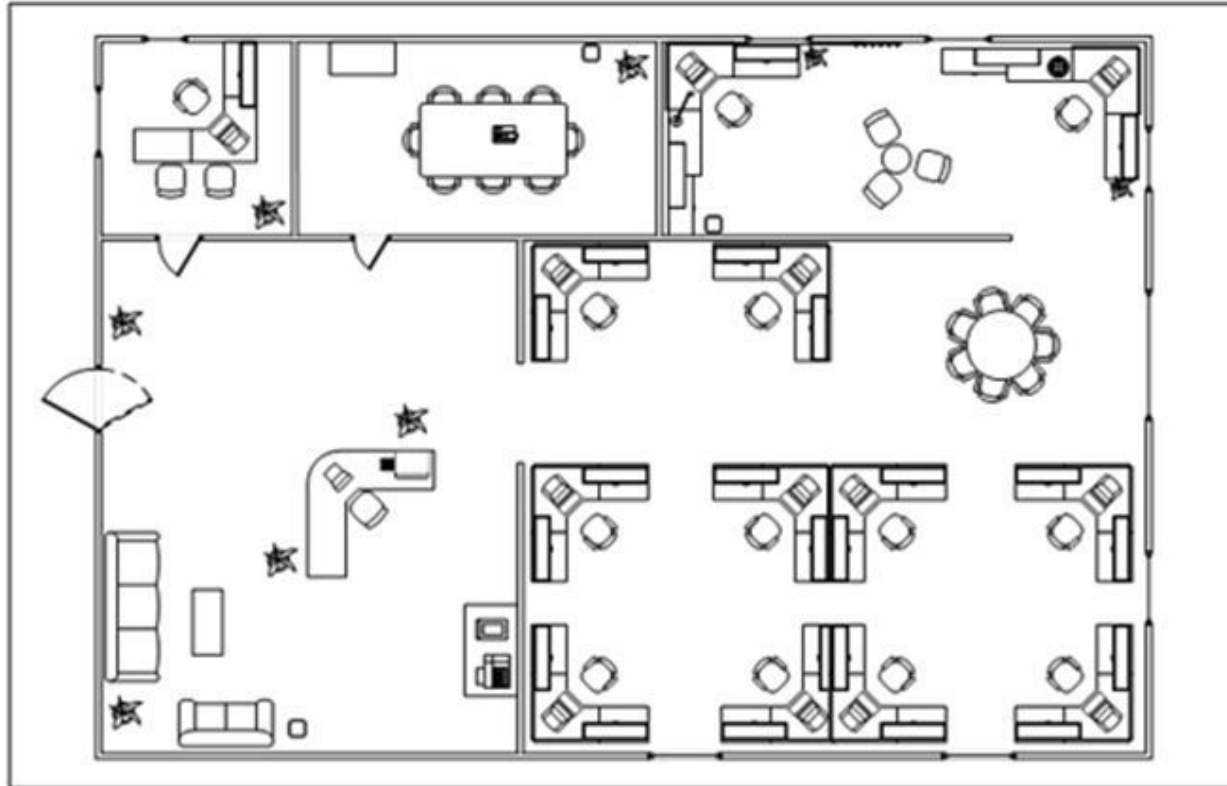
Making Deal

# Pre-meetings

- Share proposal
- Reach consensus
- Maintain Harmony



# Meeting Roadmap



# Meeting in Style

- Single Speaker
- Avoid Interrupting
- Positive Attitude



# Company Parties are Fun (Mandatory)



---

---

# Public Etiquette

— ~ Everyday Life ~ —

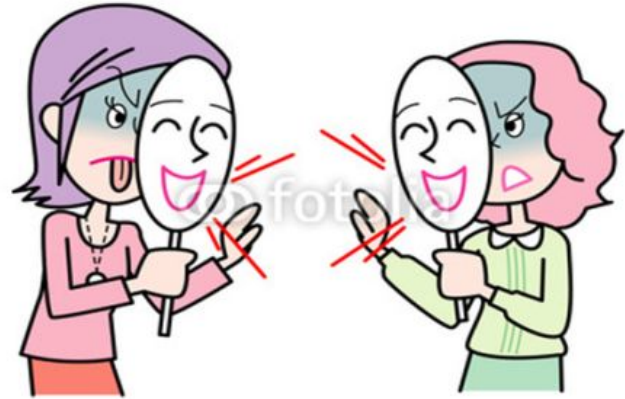
---

---



# Purpose

- Maintain harmony (wa)
- Aimai= avoid stating things clearly
- Honne= true feelings (private face)
- Tatemae=(public face)
  - Creates comfortable atmosphere
  - Not direct expressions



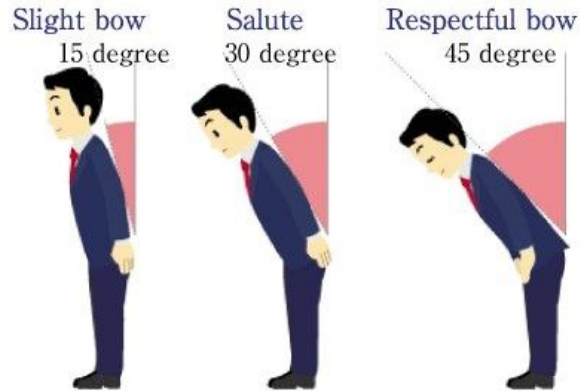
# Transportation

- Quiet
- Giving up seats for older people
- Waiting in line
- Not using headphones when using bicycles
- Walking bicycles in busy streets

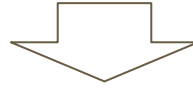


# Interactions

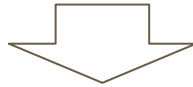
- Apology
- Bowing
- Face masks



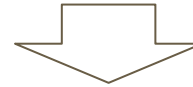
Shinto



Bushido



Business  
Etiquette



Public  
Etiquette

Questions?